

ICE CREAM GLASS DOOR MERCHANDISER

CHART #1

(SEE ADJUSTMENTS FOR OPTIONAL LIGHTING BELOW) 1756 Btuh/Door @ -23°F Suction & -12°F Discharge Air Temp.

DOORS	LINEAL FEET	75°F (24°C) Store 1000 Btuh/hr Req'd.	CONDENSING UNIT SELECTION CHART R-22					LINE SIZING					ELECTRICAL DATA								
			AIR ENTERING THIS CONDENSING UNIT					SUCTION LINE					LIQUID	208V DEFROST			120 VOLT DATA				
			85F 30C	90F 32C	95F 35C	100F 38C	105F 41C	M	E	T	E	R		One Phase Total Amps	Defrost Control	3 Phase High Leg(s)	Fan amps HG EL	Anti- sweat amps	HORIZ VHO opt. HO std.	VERT opt. T8	VERT opt. VHO HO
			50	100	150	200	250	15	30	45	60	75									
2	5' 2"	3.8	190L								5/8		3/8	6.6	TG-30		1.5 1.2	3.2	2.9 1.6	2.2	4.9 3.2
3	7' 8 1/16"	5.8	200L								7/8			10.8			2.2 1.8	4.7	2.9 2.1	2.9	5.8 3.2
4	10' 2 7/8"	7.7												15.0			2.8 2.5	6.2	5.8 3.1	3.7	7.7 4.8
5	12' 9 5/16"	8.8	300L											19.3			3.5 3.0	7.8	6.0 3.1	4.3	8.5 4.8
6	15' 4 7/8"	10.5												21.6	TG-3-30		4.4 3.6	9.4	5.8 4.2	5.8	11.6 6.4
7	17' 11 5/16"	12.3												25.8	TG-40	19A	5.0 4.2	10.9	8.7 5.2	6.6	13.5 8.0
8	20' 5 3/4"	14.0	D301L											30.1	TG-3-40	23A	5.6 4.8	12.5	8.9 5.2	7.2	14.3 8.0
9	23' 3 1/16"	15.8	D401L											34.3	TG-50	26A	6.3 5.4	14.0	11.8 6.2	8.0	16.2 9.6
10	25' 6 5/8"	17.6												38.6		30A	7.0 6.0	15.6	12.0 6.2	8.6	17.0 9.6
11	28' 2 3/16"	19.3	D601L	D651L												26A	7.8 6.6	17.2	11.8 7.3	10.1	20.1 11.2
12	30' 8 5/8"	21.1		D661L												30A	8.5 7.2	18.7	14.7 8.3	10.9	22.0 12.8
13	33' 3 1/16"	22.8														34A	9.2 7.8	20.3	14.9 8.3	11.5	22.8 12.8
14	35' 9 1/2"	24.6			D751L											34A	9.8 8.4	21.8	17.8 9.3	12.3	24.7 14.4
15	38' 3 15/16"	26.3														34A	10.5 9.0	23.4	18.0 9.3	12.9	25.5 14.4

- * CASE CIRCUITS: This case requires a separate 120V circuit for fans, lights, anti-sweats, and a 208V circuit for Electric Defrost (if used). The fan circuit for gas defrost includes the drain pan heater which is on only during defrost when the fans are off. The anti-sweat circuit feeds power to both the cyclable and non-cyclable heaters. When an Energy Saving Anti-sweat Controller is used a relay is added and a jumper is removed to control the cyclable heaters.
- * The temperature control mode used should prevent excessively low discharge air temps which irritates product frosting. This limit should be -12°F.
- * **If High Efficiency Fans are used with electric defrost deduct 0.23 amps per door. LIGHTS REMAIN ON DURING DEFROST
- * Standard lighting is Horizontal HO
- * Optional Horizontal VHO 1500MA lighting add 218 Btuh/dr. Optional Vertical T8 lighting deduct 100 Btuh/dr.
- * Optional Vertical VHO lighting add 340 Btuh/dr. Optional Vertical HO 800MA lighting add 100 Btuh/dr.

ANNUAL COMPARATIVE OPERATING COST PER DOOR OF CASE (C.O.C.)							CONTROL SETTINGS (R-22)				CHART #2
CASE	Fans HEF	A.S/Saver	Lights	208V Defrost	Condensing Unit	TOTALS††	DEFROST CONTROL				PRESSURE
	\$3.77/2.26	\$14.89/11.88	6.79	\$2.93	\$29.17	\$57.55	P/Day	Mode	Failsafe	Term Temp.	Cut In: 12#
2 Dr	90W/54W	360W	153W	1373W	w/Opt.A.S. Saver	\$52.56	1	Electric	60 Min.	50°F	Cut Out: 4#
5 Dr	225W/135W	850W	388W	4015W	NET SAVINGS	\$ 4.99	2	Hot Gas	20-26 Min.	70°F	

Case Dr. x C.O.C. = "Cost per Year" @ 1c/KWH. USE TOTALS TO COMPARE CASES & OPTIONS! *HEF = Hi-Efficiency Fans. ††@ 1c/KWH

CASE BTUH REQUIREMENTS are calculated to produce approximately the indicated entering case air temp with absolute maximum operating ambient limits of 75F & 55% RH. SUCTION LINE SIZING: Select the point of intersection of the case line-up and the equivalent footage. Allow for all fittings in addition to the actual line length. STEP SIZING is suggested for selections falling in the first half of a size range. Pipe one size smaller can be used on the 50' of the run closest to the cases when the entire run is 100 equivalent feet or more. LIQUID LINE SIZING is based on 5lb. pressure drop in 150' of line. See complete line size charts in front of the TYLER SPEC GUIDE BOOK.

The information contained herein is based on technical data and tests which we believe to be reliable and is intended for use by persons having technical skill, at their own discretion and risk. Since conditions of use are outside Tyler's control, we can assume no liability for results obtained or damages incurred through the applications of the data presented. SPECIFICATIONS ARE SUBJECT TO CHANGE WITHOUT NOTICE. Printed in the U.S.A.

Tyler Spec Sheet

LT-34

T5FGA GLASS DOOR CASE-IC
SG 02057 Repl. 3/94 Rev. 1/95

T5FGA

C:\MANUALS\T5FG\T5FGSPEC.CHP

FROZEN FOOD GLASS DOOR MERCHANDISER

CHART #1

(SEE ADJUSTMENTS FOR OPTIONAL LIGHTING BELOW) 1638 Btuh/Door @ - 16°F Suction & - 5°F Discharge Air Temp.

DOORS	LINEAL FEET	75°F (24°C) Store 1000 Btuh/hr Req'd.	CONDENSING UNIT SELECTION CHART					R-22					LINE SIZING					ELECTRICAL DATA						
			AIR ENTERING THS CONDENSING UNIT					SUCTION LINE					LIQUID	208V DEFROST			120 VOLT DATA							
			85F 30C	90F 32C	95F 35C	100F 38C	105F 41C	M	E	T	E	R		Equivalent Feet	One Phase Total Amps	Defrost Control	3 Phase High Leg(s)	Fan amps HG EL	Anti- sweat amps	HORZ VHO opt. HO std.	VERT opt. T8	VERT opt. VHO HO		
			15	30	45	60	75	50	100	150	200	250												
2	5' 2"	3.6	100L								5/8	3/8	6.6	TG-30		1.5 1.2	3.2	2.9 1.6	2.2	4.9 3.2				
3	7' 8 7/16"	5.4	190L								7/8		10.8			2.2 1.8	4.7	2.9 2.1	2.9	5.8 3.2				
4	10' 2 7/8"	7.2	200L										15.0			2.8 2.5	6.2	5.8 3.1	3.7	7.7 4.8				
5	12' 9 5/16"	8.2											19.3			3.5 3.0	7.8	6.0 3.1	4.3	8.5 4.8				
6	15' 4 7/8"	9.8	300L										21.6	TG-3-30	19A	4.4 3.6	9.4	5.8 4.2	5.8	11.6 6.4				
7	17' 11 5/16"	11.5											25.8	TG-40	23A	5.0 4.2	10.9	8.7 5.2	6.6	13.5 8.0				
8	20' 5 3/4"	13.1	D301L								1 1/8		30.1	TG-3-40	26A	5.6 4.8	12.5	8.9 5.2	7.2	14.3 8.0				
9	23' 3 1/16"	14.7											34.3	TG-50	30A	6.3 5.4	14.0	11.8 6.2	8.0	16.2 9.6				
10	25' 6 5/8"	16.4											38.6		34A	7.0 6.0	15.6	12.0 6.2	8.6	17.0 9.6				
11	28' 2 3/16"	18.0	D401L												26A	7.8 6.6	17.2	11.8 7.3	10.1	20.1 11.2				
12	30' 8 5/8"	19.7													30A	8.5 7.2	18.7	14.7 8.3	10.9	22.0 12.6				
13	33' 3 1/16"	21.3	D601L								1 3/8	1/2			34A	9.2 7.8	20.3	14.9 8.3	11.5	22.1 12.8				
14	35' 9 1/2"	22.9	D651L												34A	9.8 8.4	21.8	17.8 9.3	12.3	24.7 14.4				
15	38' 3 1/16"	24.6	D661L								1 5/8				34A	10.5 9.0	23.4	18.0 9.3	12.9	25.5 14.4				

* CASE CIRCUITS: This case requires a separate 120V circuit for fans, lights, anti-sweats, and a 208V circuit for Electric Defrost (if used). The fan circuit for gas defrost includes the drain pan heater which is on only during defrost when the fans are off. The anti-sweat circuit feeds power to both the cyclable and non-cyclable heaters. When an Energy Saving Anti-sweat Controller is used a relay is added and a jumper is removed to control the cyclable heaters.

* The temperature control mode used should prevent excessively low discharge air temps which irritates product frosting. This limit should be -12°F.

* **If High Efficiency Fans are used with electric defrost deduct 0.23 amps per door. LIGHTS REMAIN ON DURING DEFROST

* Standard lighting is Horizontal HO

* Optional Horizontal VHO 1500MA lighting add 218 Btuh/dr. Optional Vertical T8 lighting deduct 100 Btuh/dr.

* Optional Vertical VHO lighting add 340 Btuh/dr. Optional Vertical HO lighting add 100 Btuh/dr.

CHART #2

ANNUAL COMPARATIVE OPERATING COST PER DOOR OF CASE (C.O.C.)

CONTROL SETTINGS (R-22)

CASE	Fans HEF	A.S./SAVER	Lights	208V Defrost	Condensing Unit	TOTALS††	DEFROST CONTROL				PRESSURE
	\$3.77/2.26	\$14.89/11.88	6.79	\$2.93	\$25.15	\$53.53	P/Day	Mode	Failsafe	Term Temp.	Cut In:
2 Dr	90W/54W	360W	153W	1373W	w/Opt.A.S. SAVER	\$48.54	1	Electric	60 Min.	50°F	16#
5 Dr	225W/135W	850W	388W	4015W	NET SAVINGS	\$ 4.99	2	Hot Gas	18-20 Min.	70°F	Cut Out: 8#

Case Dr. x C.O.C. = "Cost per Year" @ 1c/KWH. USE TOTALS TO COMPARE CASES & OPTIONS! *HEF = Hi-Efficiency Fans. ††@ 1c/KWH

CASE BTUH REQUIREMENTS are calculated to produce approximately the indicated entering case air temp with absolute maximum operating ambient limits of 75F & 55% RH. SUCTION LINE SIZING: Select the point of intersection of the case line-up and the equivalent footage. Allow for all fittings in addition to the actual line length. STEP SIZING is suggested for selections falling in the first half of a size range. Pipe one size smaller can be used on the 50' of the run closest to the cases when the entire run is 100 equivalent feet or more. LIQUID LINE SIZING is based on 5lb. pressure drop in 150' of line. See complete line size charts in front of the TYLER SPEC GUIDE BOOK.

The information contained herein is based on technical data and tests which we believe to be reliable and is intended for use by persons having technical skill, at their own discretion and risk. Since conditions of use are outside Tyler's control, we can assume no liability for results obtained or damages incurred through the applications of the data presented. SPECIFICATIONS ARE SUBJECT TO CHANGE WITHOUT NOTICE. Printed in the U.S.A.

Tyler Spec Sheet

LT-35

T5FGA GLASS DOOR CASE-FF

T5FGA

SG 02056

Repl. 3/94

Rev. 1/95

MED or LOW TEMP GLASS DOOR MERCHANDISER

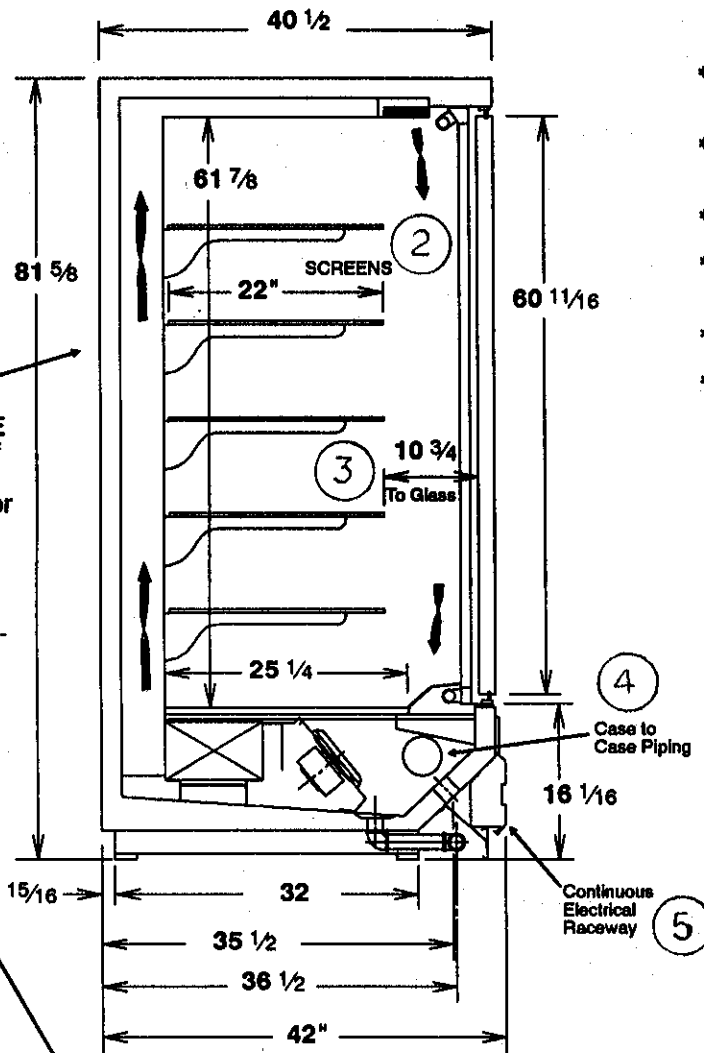
CASE FEATURES

- * 2 Horizontal Rows - 800ma Lights Standard
- * Tempered, Full View, Heat Reflective Glass Doors
- * Ample Space for Case to Case Piping
- * 1 1/2" Diameter Cast-in Brass Drain - Fully Accessible
- * 30" Door width all models
- * Bumper protection where needed

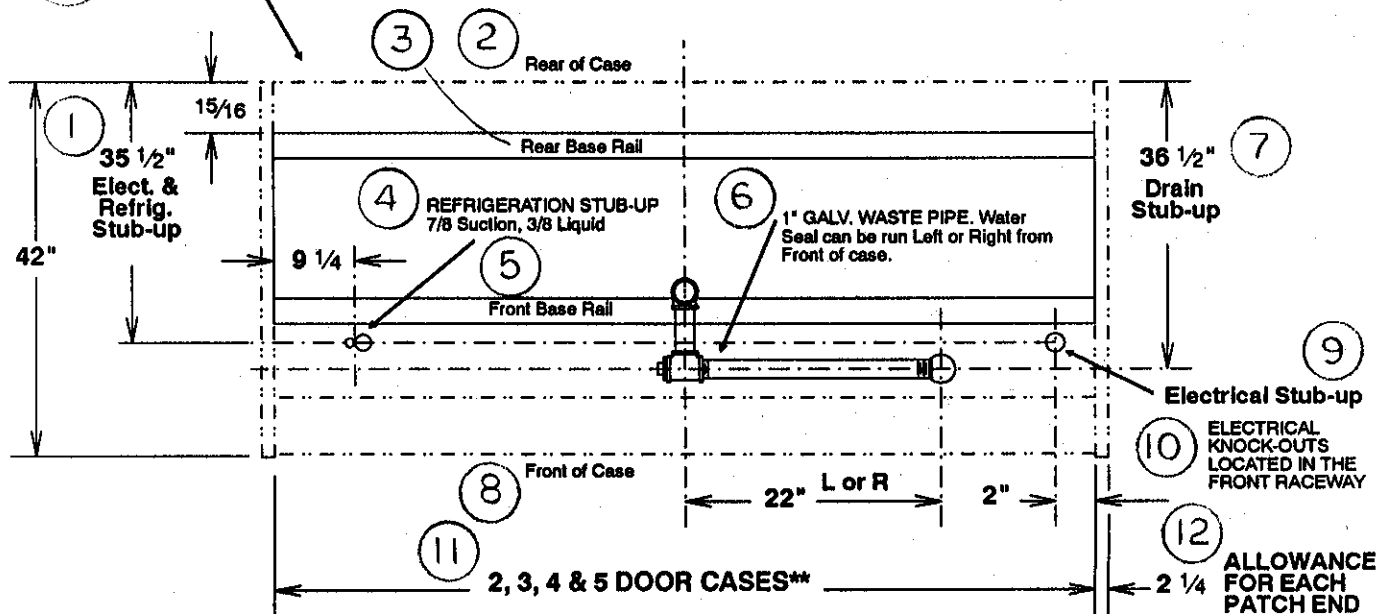
** CASE LENGTHS

- 2 Door = 62"
- 3 Door = 92 7/16"
- 4 Door = 122 7/8"
- 5 Door = 153 5/16"
- (Add 2 1/4" for each patch End)

① ALLOW A 3" SPACE between the back of the case and store walls, other cases, or coolers to minimize possible condensation problems. FORCED VENTILATION may be necessary in some situations.



CROSS SECTION



FLOOR PLAN

Tyler Refrigeration Corp.

LT-36

T5FGA GLASS DOOR CASE

SG 02050

Repl. 3/94

Rev. 1/95

T5FGA
T5NGA