

D5FG-D GLASS DOOR MERCHANDISER FOR ICE CREAM

Tyler Refrigeration Corporation

677* Btuh/Ft. @ -25°F Suction & -12°F Entering Air Temp.

| CASE MODELS | LINEAL FEET | 75°F (24°C) Store 1000 Btuh/hr Req'd. | CONDENSING UNIT SELECTION CHART R22 | | | | | LINE SIZING | | | | | ELECTRICAL DATA | | | | | |
|-------------|-------------|---------------------------------------|-------------------------------------|---------|---------|----------|----------|--------------|------|------|------|------|----------------------|----------------------------------|-------------------------|---------------|---------------------|---------------------|
| | | | AIR ENTERING THS CONDENSING | | | | | SUCTION LINE | | | | | 208 VOLT DEFROST | | | 115 VOLT DATA | | |
| | | | 85F 30C | 90F 32C | 95F 35C | 100F 38C | 105F 41C | M 15 | E 30 | T 45 | E 60 | R 75 | ONE PHASE TOTAL AMPS | DEFROST CONTROL REQUIRED 3-PHASE | THREE PHASE HIGH LEG(S) | Fan Amp Std. | Glass opt. 49" amps | Doors Std. 59" Amps |
| 8' 12' | 6 | 4.0 | | | | | | | | | 3/8 | 9.6 | TC-30 | | .74 | | | 2.9 |
| 2 doors | 6 | 4.0 | | | | | | | | | 3/8 | 9.6 | TC-30 | | 1.6 | 2.7 | 3.0 | 1.6 |
| 3 doors | 8 | 5.4 | | | | | | | | | 3/8 | 13.0 | | | 1.11 | | | 3.7 |
| 1 | 8 | 5.4 | | | | | | | | | 3/8 | 13.0 | | | 2.4 | 4.0 | 4.4 | 2.1 |
| 4 doors | 10 | 6.8 | | | | | | | | | 3/8 | 16.1 | | | 1.48 | | | 4.9 |
| | 10 | 6.8 | | | | | | | | | 3/8 | 16.1 | | | 3.2 | 4.9 | 5.6 | 2.6 |
| 5 doors | 12 | 8.1 | | | | | | | | | 3/8 | 19.2 | | | 1.85 | | | 6.0 |
| 1 | 12 | 8.1 | | | | | | | | | 3/8 | 19.2 | | | 4.0 | 6.1 | 7.0 | 3.1 |
| 2 | 16 | 10.8 | | | | | | | | | 3/8 | 26.0 | TC-3-30 TC-40 | 23A | 2.22 | | | 7.4 |
| | 16 | 10.8 | | | | | | | | | 3/8 | 26.0 | TC-3-30 TC-40 | 23A | 4.8 | 8.0 | 8.8 | 4.2 |
| 1 | 20 | 13.5 | | | | | | | | | 1/2 | 32.2 | TC-3-40 | 28A | 2.96 | | | 9.7 |
| 1 | 20 | 13.5 | | | | | | | | | 1/2 | 32.2 | TC-3-40 | 28A | 6.4 | 10.1 | 11.4 | 5.2 |
| 2 | 24 | 16.2 | | | | | | | | | 1/2 | 38.4 | TC-50 TC-3-40 | 34A | 3.70 | | | 12.9 |
| | 24 | 16.2 | | | | | | | | | 1/2 | 38.4 | TC-50 TC-3-40 | 34A | 8.0 | 12.2 | 14.0 | 6.2 |
| 2 | 28 | 18.9 | | | | | | | | | 1/2 | | | | 4.07 | | | 13.4 |
| 1 | 28 | 18.9 | | | | | | | | | 1/2 | | | | 8.8 | 14.1 | 15.8 | 7.3 |
| 1 | 32 | 21.6 | | | | | | | | | 1/2 | | | | 4.81 | | | 15.6 |
| 2 | 32 | 21.6 | | | | | | | | | 1/2 | | | | 10.4 | 16.2 | 18.8 | 8.3 |
| 3 | 36 | 24.4 | | | | | | | | | 1/2 | | | | 5.55 | | | 17.4 |
| | 36 | 24.4 | | | | | | | | | 1/2 | | | | 12.0 | 18.3 | | 9.3 |

- CASE CIRCUITS: In addition to the 208V defrost circuit, there is the 115V case Fan circuit plus the 115V case anti-sweat heater circuit. Anti-sweat heat is not required 100% of the time in most stores and the use of a Tyler ES-4 Energy Saver control to cycle this circuit as required is strongly recommended. Shelf or canopy lights require a separate 115V circuit which can be switched at the back room for convenience in controlling the lights.
- Anti-Sweat Heat: There is one circuit for all of the anti-sweat heat on these cases. The mullions are wired to operate all the time, but the electrically heated door glass and frame circuit is wired to an ES-4 energy saver control which can be plugged into the top of the case. It is used to cycle this heat on and off in response to store humidity. If the ES-4 control is not used, a jumper plug in the receptacle at the case top completes the circuit.
- Electric Defrost is Standard Amps are given at 208V (208V amps x 1.06 = 220V amps). Optional Gas Defrost is available.
- Fan Circuit power drain pan heaters during gas defrost. If Hef fan motors are used size circuit using 1.8A for 8' and 2.2A for a 12' case.
- 6' Case Dimensions: Case is 64 1/4" long - - 68 3/4" long with 2 ends.
- 10' Case Dimensions: Case is 115 1/4" long - - 119 3/4" long with 2 ends

***ALTERNATE LIGHTING**

Btuh/Ft.

| | |
|-----------------------------------|------------|
| 1 Row Top Horiz. + Mullion-H.O. | 725 @ -25° |
| 2 Row V.H.O In Lieu of Std. | 767 @ -25° |
| 1 Row Top Horiz. + Mullion-V.H.O. | 858 @ -30° |

ANNUAL COMPARATIVE OPERATING COST PER FOOT OF CASE (C.O.C.)

CONTROL SETTINGS (R-22)

| CASE | Fans/ | Std Glass Opt | Lights | 208V Defrost | Condensing Unit | TOTALS @ 1c/KWH | DEFROST CONTROL | | | PRESSURE | |
|------|-------|---------------|--------|--------------|-----------------|--------------------|-----------------|---------|-----------|----------|----------|
| | 1.83 | 6.20 | 5.41 | 1.35 | 1.22 | \$11.31 | \$21.91 | Per Day | Mode | Failsafe | CUT IN: |
| 8' | 150w | 547w | 497w | 255w | 2700 | w/Opt ES-4 Cyl | \$20.33 | 1 | Electric | 60 | 15# |
| 12' | 250w | 850w | 745w | 370w | 4000 | NET SAVINGS | \$ 1.578 | 2-3 | Gas Defr. | 20-26 | CUT OUT: |
| | | | | | | | | | | | 7# |

Case Ft. x C.O.C. = "Cost per Year" @ 1c/KWH. USE TOTALS TO COMPARE CASES & OPTIONS! Watts @ 115V *HEF = Hi-Efficiency Fans.

CASE BTUH REQUIREMENTS are calculated to produce approximately the indicated entering case air temp with operating ambient limits of 75°F & 55% RH. SUCTION LINE SIZING: Select the point of intersection of the case line-up and the equivalent footage. Allow for all fittings in addition to the actual line length. STEP SIZING is suggested for selections falling in the first half of a size range. Pipe one size smaller can be used on the 50' of the run closest to the cases when the entire run is 100 equivalent feet or more. LIQUID LINE SIZING is based on 5lb. pressure drop in 150' of line. See complete line size charts in front of the TYLER SPEC GUIDE BOOK.

The information contained herein is based on technical data and tests which we believe to be reliable and is intended for use by persons having technical skill, at their own discretion and risk. Since conditions of use are outside Tyler's control, we can assume no liability for results obtained or damages incurred through the applications of the data presented. SPECIFICATIONS ARE SUBJECT TO CHANGE WITHOUT NOTICE. Printed in the U.S.A.

Tyler Spec Sheet

LT-27

Glass Door Ice Cream
SG0556 Repl. 7/90 Rev. 11/92

D5FG-D

D5FG-D GLASS DOOR MERCHANDISER FOR FROZEN FOOD

Tyler Refrigeration Corporation

585* Btuh/Ft. @ -15°F Suction & -4°F Entering Air Temp.

| CASE MODELS | LINEAL FEET | 75°F (24°C) Store 1000 Btuh/hr Req'd. | CONDENSING UNIT SELECTION CHART R22 | | | | | LINE SIZING | | | | | ELECTRICAL DATA | | | | | |
|-------------|-------------|--|-------------------------------------|---------|---------|----------|----------|--------------|------|------|------|------|------------------|----------------------|----------------------------------|-------------------------|------------------|---------------------|
| | | | AIR ENTERING THS CONDENSING | | | | | SUCTION LINE | | | | | 208 VOLT DEFROST | | | 115 VOLT DATA | | |
| | | | 85F 30C | 90F 32C | 95F 35C | 100F 38C | 105F 41C | M 15 | E 30 | T 45 | E 60 | R 75 | LIQUID | ONE PHASE TOTAL AMPS | DEFROST CONTROL REQUIRED 3-PHASE | THREE PHASE HIGH LEG(S) | Fan Amp Hef Std. | Glass opt. 49" amps |
| 8' 12' | 6 | 3.5 | | | | | | | | | 3/8 | 9.6 | TC-30 | | .74 | 2.7 | 3.0 | 2.9 |
| 2 doors | 8 | 4.7 | | | 190L | | | | | | | 13.0 | | | 1.11 | 4.0 | 4.4 | 3.7 |
| 3 doors | 10 | 5.9 | | | | | | | | | | 16.1 | | | 1.48 | 4.9 | 5.6 | 4.9 |
| 4 doors | 12 | 7.0 | | | 200L | | | | | | | 19.2 | | | 1.85 | 6.1 | 7.0 | 6.0 |
| 5 doors | 16 | 9.4 | | | | | | | | | | 26.0 | TC-3-30 TC-40 | 23A | 2.22 | 8.0 | 8.8 | 7.4 |
| 2 | 20 | 11.7 | | | 300L | | | | | | | 32.2 | TC-3-40 | 28A | 2.96 | 10.1 | 11.4 | 9.7 |
| 1 | 24 | 14.0 | | | | | | | | | | 38.4 | TC-50 | 34A | 3.70 | 12.2 | 14.0 | 12.9 |
| 2 | 28 | 16.4 | | | D301L | | | | | | | | | 28A | 4.07 | 14.1 | 15.8 | 13.4 |
| 1 | 32 | 18.7 | | | | | | | | | | | | 34A | 4.81 | 16.2 | 18.8 | 15.6 |
| 2 | 36 | 21.1 | | | D401L | | | | | | | | | 34A | 10.4 | 18.3 | | 8.3 |
| 3 | 40 | 23.4 | | | | | | | | | | | | 34A | 5.55 | | | 17.4 |
| 2 | 44 | 25.8 | | | D601L | | | | | | | | TC-3-50 | 39A | 5.92 | | | 18.3 |
| 1 | | | | | D661L | | | | | | | | TC-3-40-40 | 34/28 | 6.66 | | | 10.4 |
| | | | | | | | | | | | | | | | 14.4 | | | 11.4 |

- CASE CIRCUITS: In addition to the 208V defrost circuit, there is the 115V case Fan circuit plus the 115V case anti-sweat heater circuit. Anti-sweat heat is not required 100% of the time in most stores and the use of a Tyler ES-4 Energy Saver control to cycle this circuit as required is strongly recommended. Shelf or canopy lights require a separate 115V circuit which can be switched at the back room for convenience in controlling the lights.
- Anti-Sweat Heat: There is one circuit for all of the anti-sweat heat on these cases. The mullions are wired to operate all the time, but the electrically heated door glass and frame circuit is wired to an ES-4 energy saver control which can be plugged into the top of the case. It is used to cycle this heat on and off in response to store humidity. If the ES-4 control is not used, a jumper plug in the receptacle at on the case top completes the circuit.
- Electric Defrost is Standard Amps are given at 208V (208V amps x 1.06 = 220V amps). Optional Gas Defrost is available.
- Fan Circuit power drain pan heaters during gas defrost. If Hef fan motors are used size circuit using 1.8A for 8' and 2.2A for a 12' case.
- 6' Case is 64 1/4" long and 68 3/4" long with 2 ends. 10' Case is 115 1/4" long and 119 3/4" long with 2 ends.

| *ALTERNATE LIGHTING | | Btuh/Ft. | Btuh/Ft. |
|---------------------------------|------------|-----------------------------------|------------|
| 1 Row Top Horiz. + Mullion H.O. | 633 @ -15° | 1 Row Top Horiz. + Mullion V.H.O. | 766 @ -20° |
| 2 Row V.H.O In Lieu of Std. | 675 @ -15° | | |

| ANNUAL COMPARATIVE OPERATING COST PER FOOT OF CASE (C.O.C.) | | | | | | CONTROL SETTINGS (R-22) | | | | |
|---|-----------|----------|--------|--------------|------------------|-------------------------|-----------------|-----------|----------|----------|
| CASE | Fans/HEF* | A/S Heat | Lights | 208V Defrost | Condensing Unit | TOTALS @ 1c/KWH | DEFROST CONTROL | | | PRESSURE |
| | 1.53/.88 | 3.07 | | 1.31 | \$10.70 | \$16.61 | Per Day | Mode | Failsafe | CUT IN: |
| 8' | 140w/80w | 318w | | 2860 | w/Opt HEF Motors | \$15.96 | 1 | Electric | 60 | 17# |
| 12' | 210w/120w | 420w | | 4290 | NET SAVINGS | \$.65 | 2-3 | Gas Defr. | 20-26 | CUT OUT: |
| | | | | | | | | | Min. | 8# |

Case Ft. x C.O.C. = "Cost per Year" @ 1c/KWH. USE TOTALS TO COMPARE CASES & OPTIONS! Watts @ 115V *HEF = Hi-Efficiency Fans.
 CASE BTUH REQUIREMENTS are calculated to produce approximately the indicated entering case air temp with operating ambient limits of 75F & 55% RH. SUCTION LINE SIZING: Select the point of intersection of the case line-up and the equivalent footage. Allow for all fittings in addition to the actual line length. STEP SIZING is suggested for selections falling in the first half of a size range. Pipe one size smaller can be used on the 1st half of the run closest to the cases when the entire run is 100 equivalent feet or more. LIQUID LINE SIZING is based on 5lb. pressure drop in 150' of 1/2" pipe. See complete line size charts in front of the TYLER SPEC GUIDE BOOK.

The information contained herein is based on technical data and tests which we believe to be reliable and is intended for use by persons having technical skill, at their own discretion and risk. Since conditions of use are outside Tyler's control, we can assume no liability for results obtained or damages incurred through the applications of the data presented. SPECIFICATIONS ARE SUBJECT TO CHANGE WITHOUT NOTICE. Printed in the U.S.A.

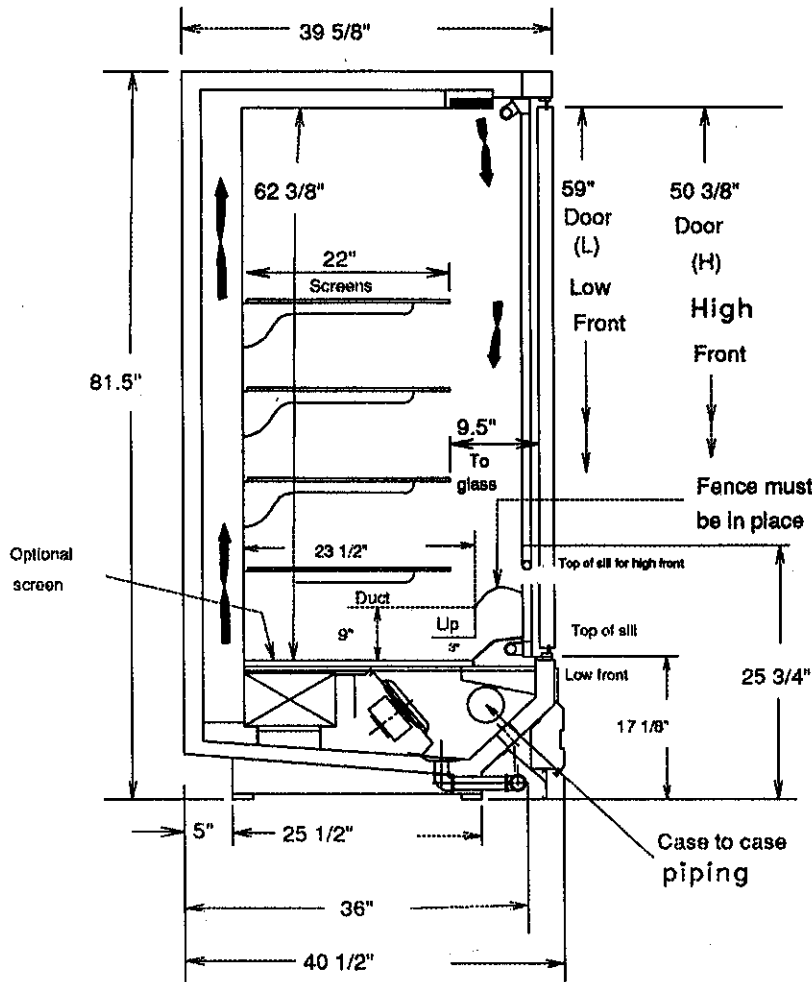
Tyler Spec Sheet

LT-28

Glass Door Frozen Food
SG0554 Repl 7/90 Rev 11/92

D5FG-D

CROSS SECTION AND FLOOR PLAN



CROSS SECTION

Case Features

- Removable fan panels
- Removable front ducts
- Ventilated base rails
- 2 Horizontal rows - 800 MA lights std.
- 22" powder coated wire shelves
- Tempered, full view, heat reflective glass doors
- Ample space for case to case piping
- 1.5" diameter cast-in-brass drain fully accessible
- Price tag moulding standard.

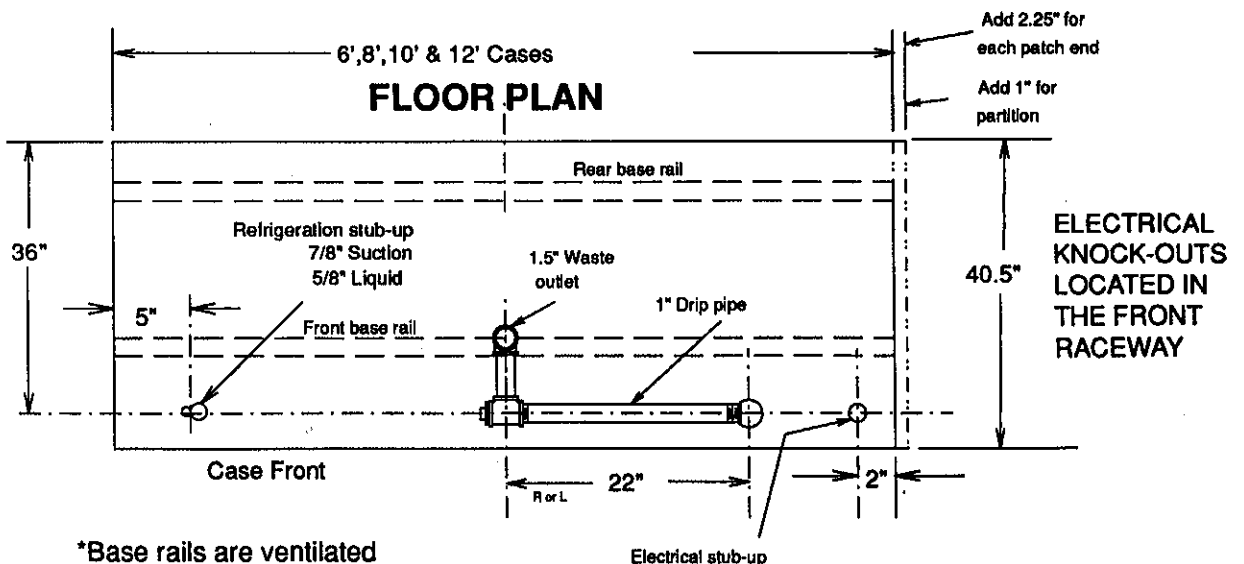
Case Lengths

- 6' Cases = 64.25"
- 8' cases = 96"
- 10' Cases = 115.25"
- 12' cases = 144"
- (Add 2.25" for each patch end.)

Door Widths

- 6' Case - 31" Nominal
(Clear opening - 28.75" Nominal)
- 8' Case - 31" Nominal
(Clear opening - 28.75" Nominal)
- 10' Case - 28" Nominal
(Clear opening - 25.50" Nominal)
- 12' Case - 28" Nominal
(Clear opening - 25.50" Nominal)

ALLOW 3" SPACE between the back of the case and store walls, other cases, or coolers to minimize possible condensation problems.
FORCED VENTILATION could be necessary in some situations



*Base rails are ventilated

Electrical stub-up